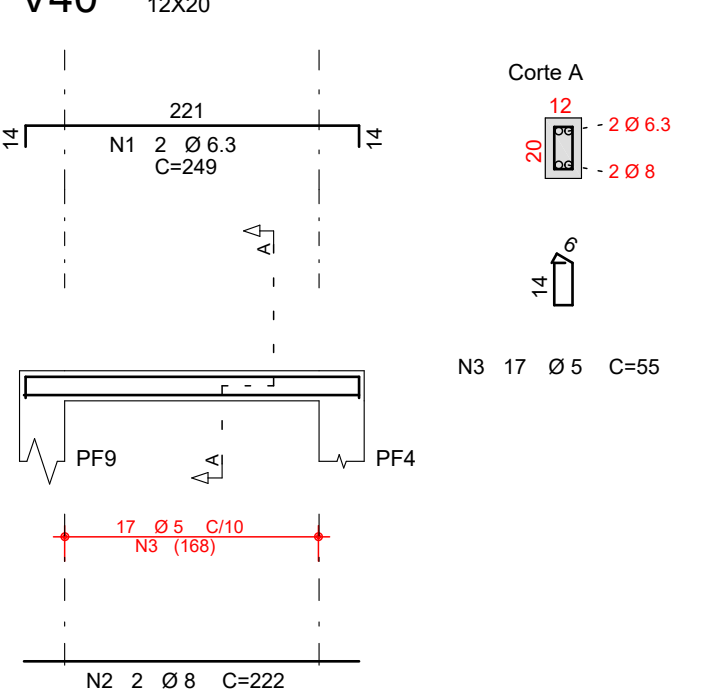
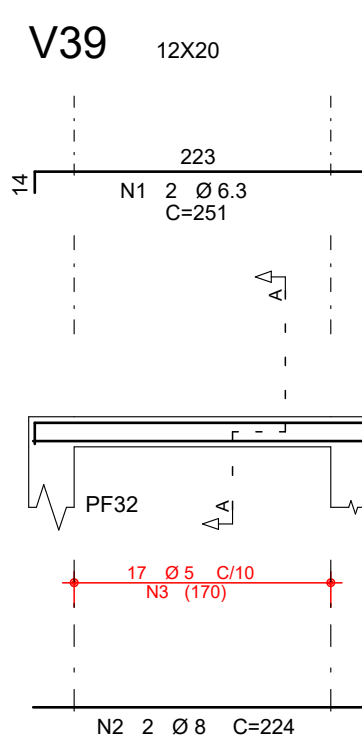
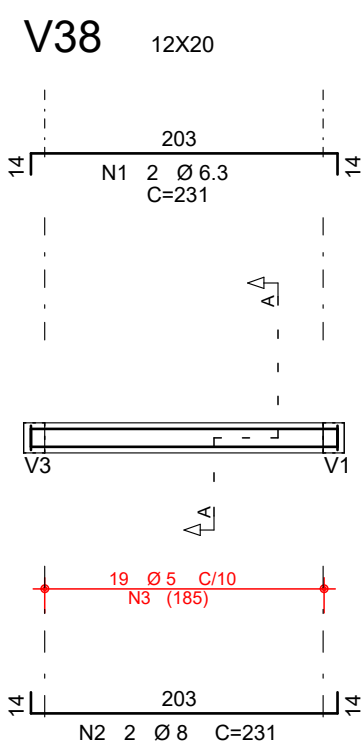
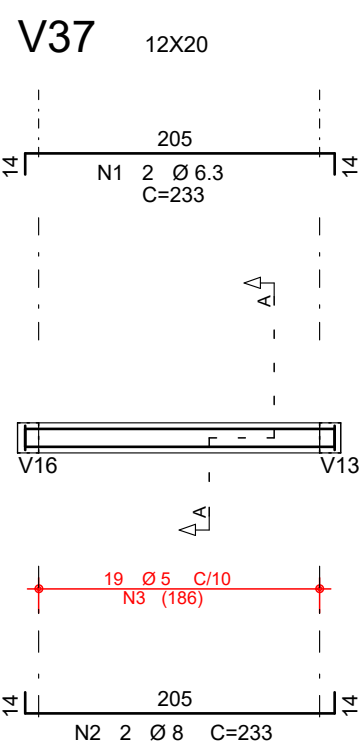
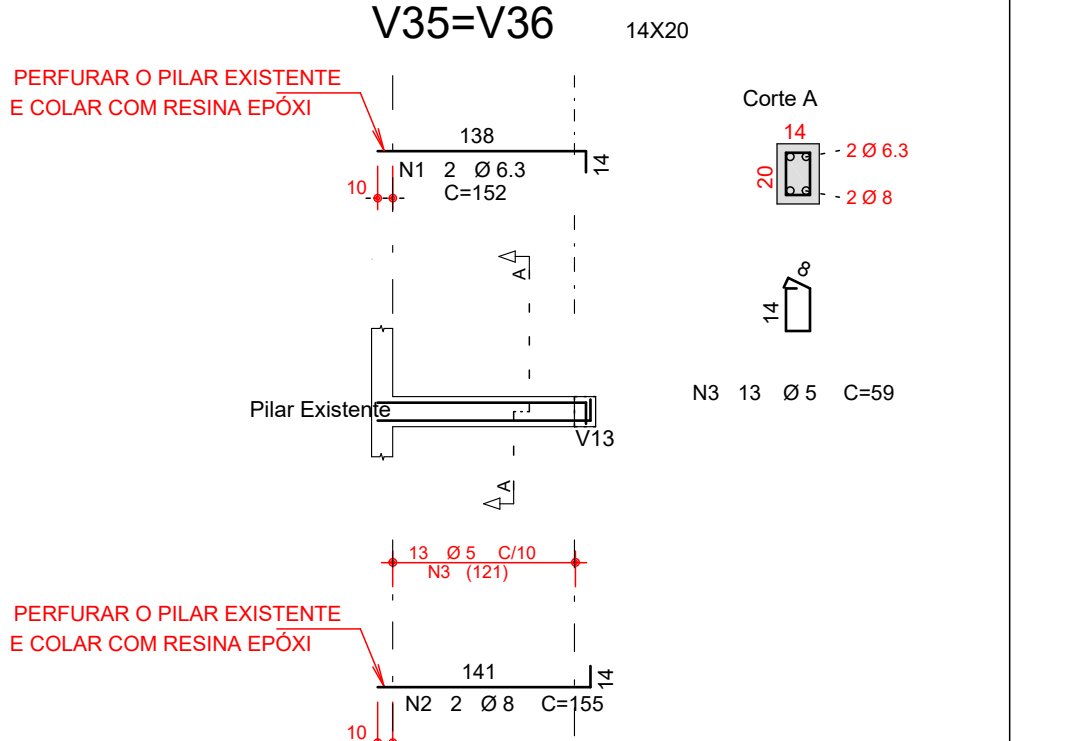
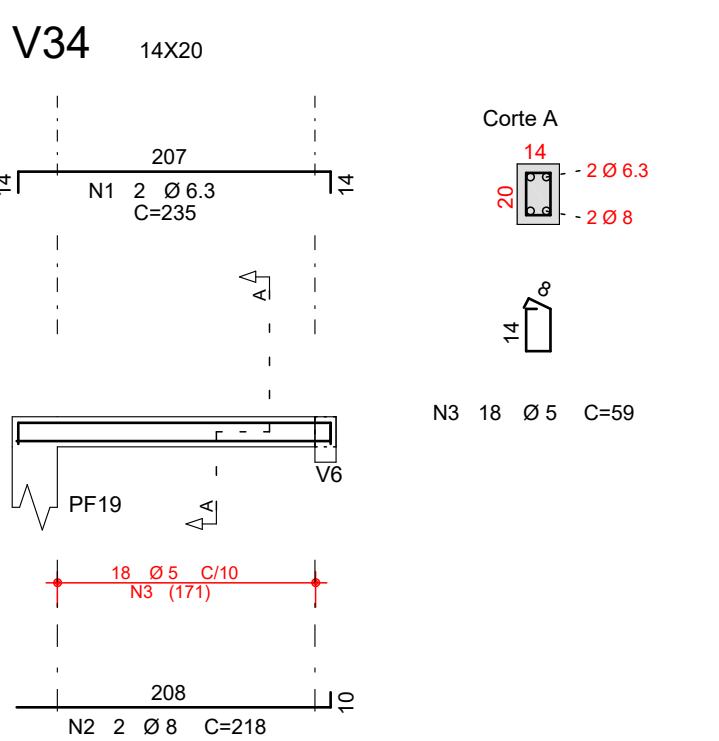
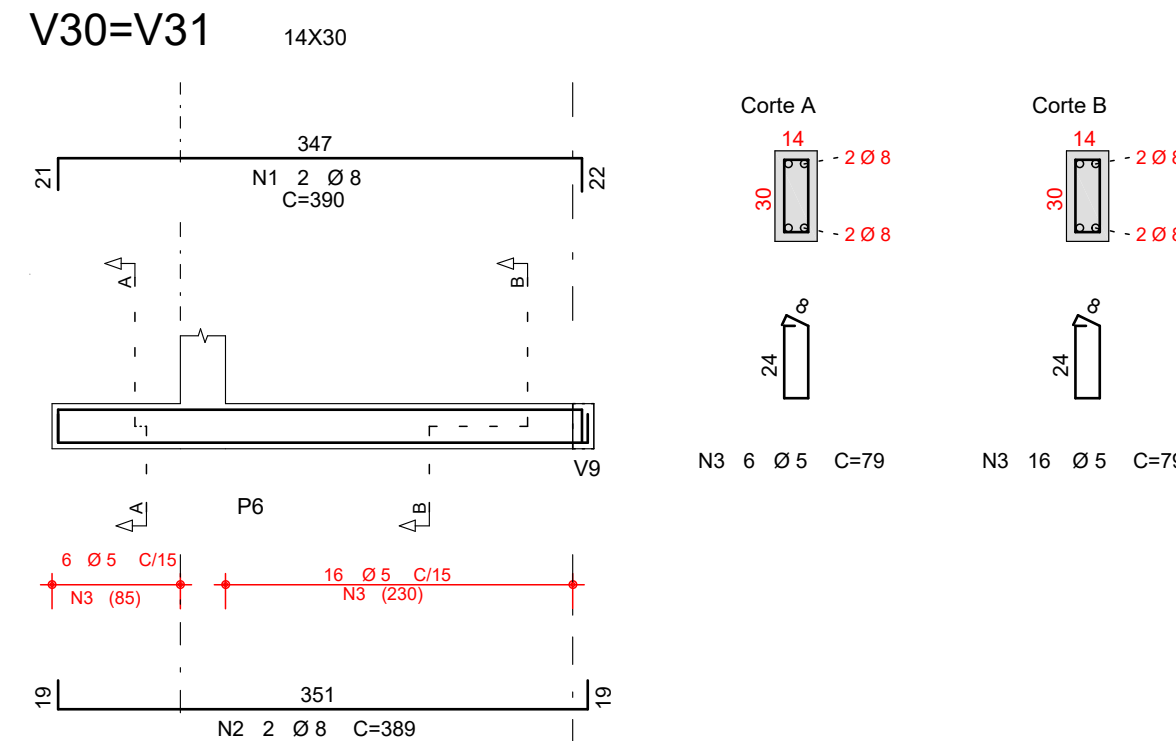
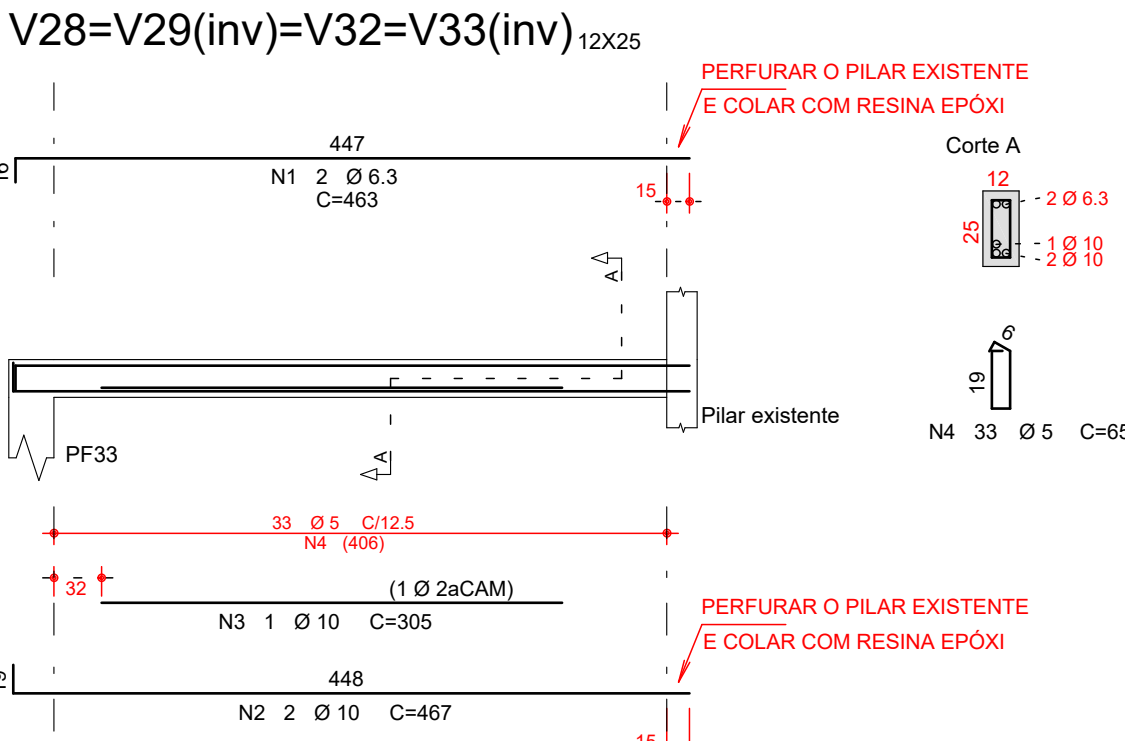
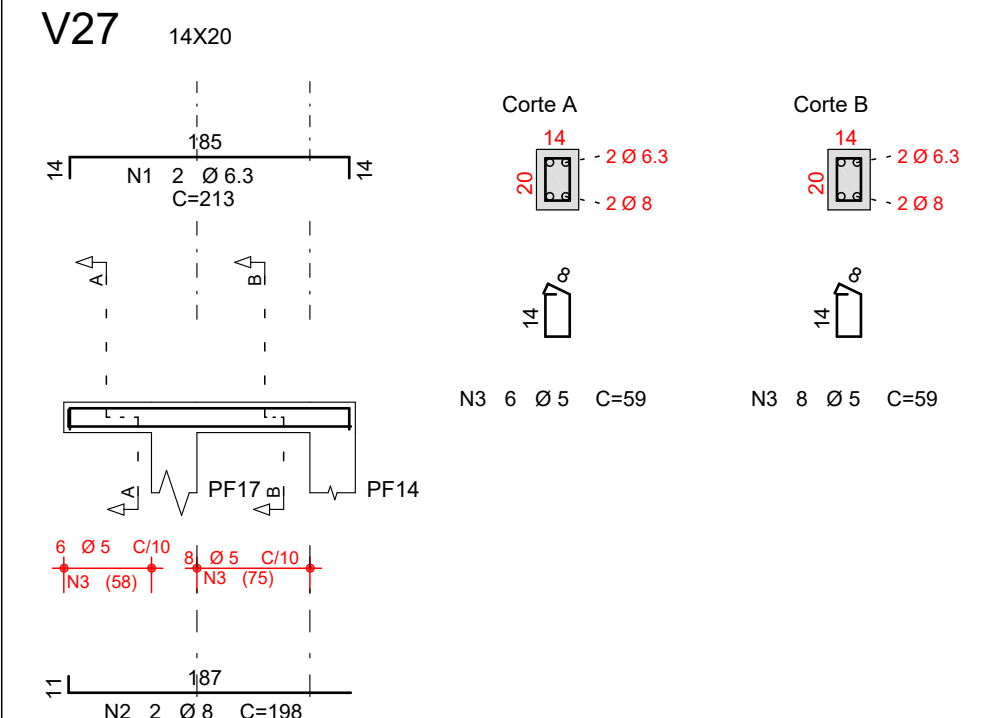
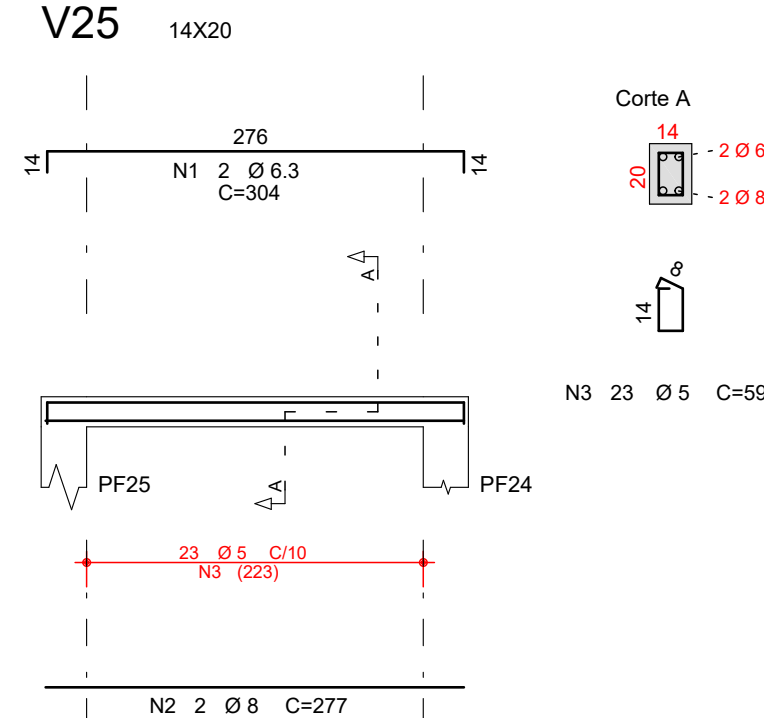
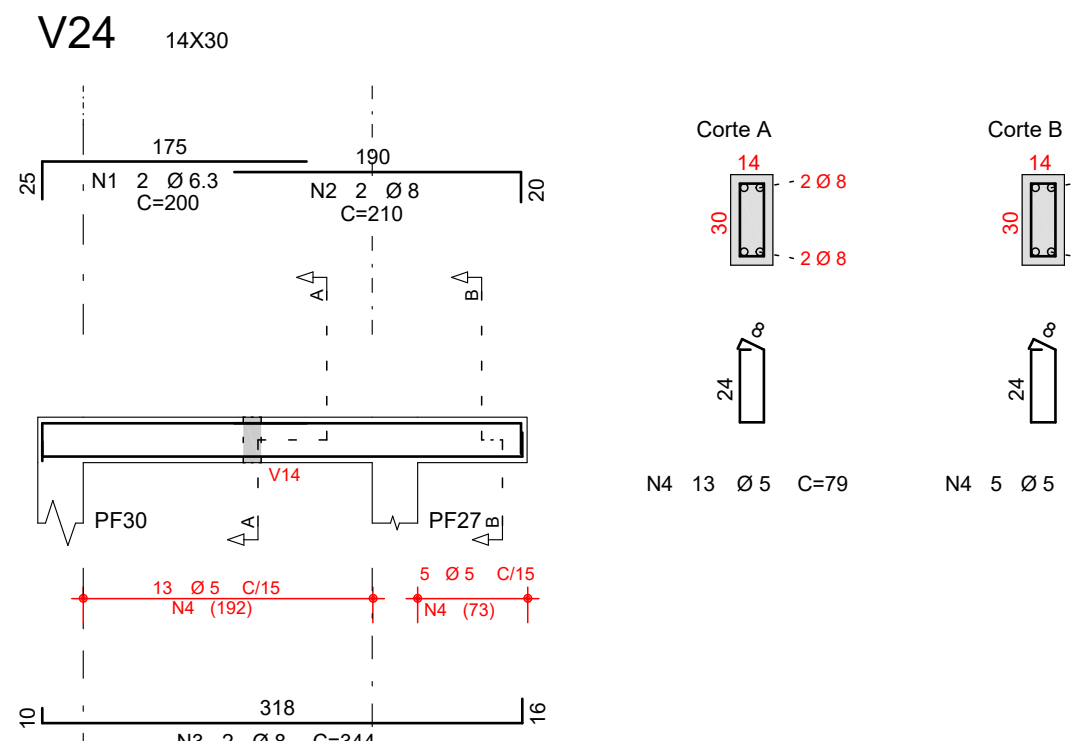
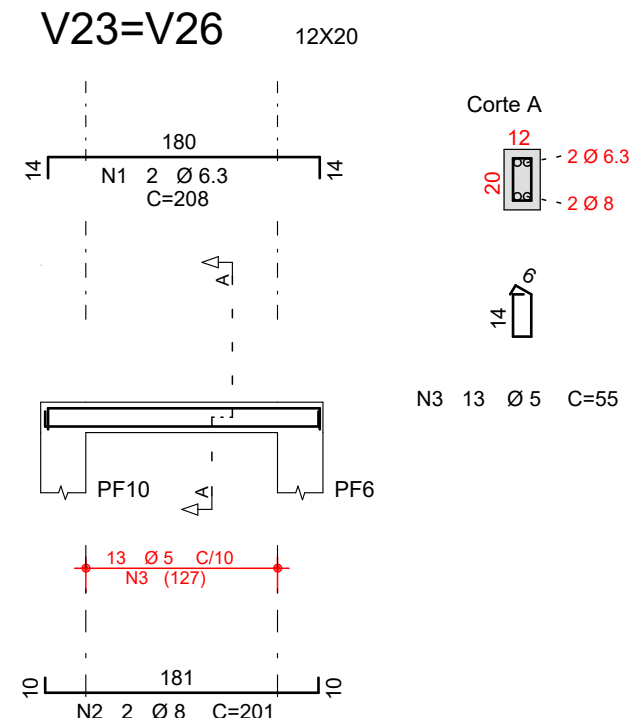
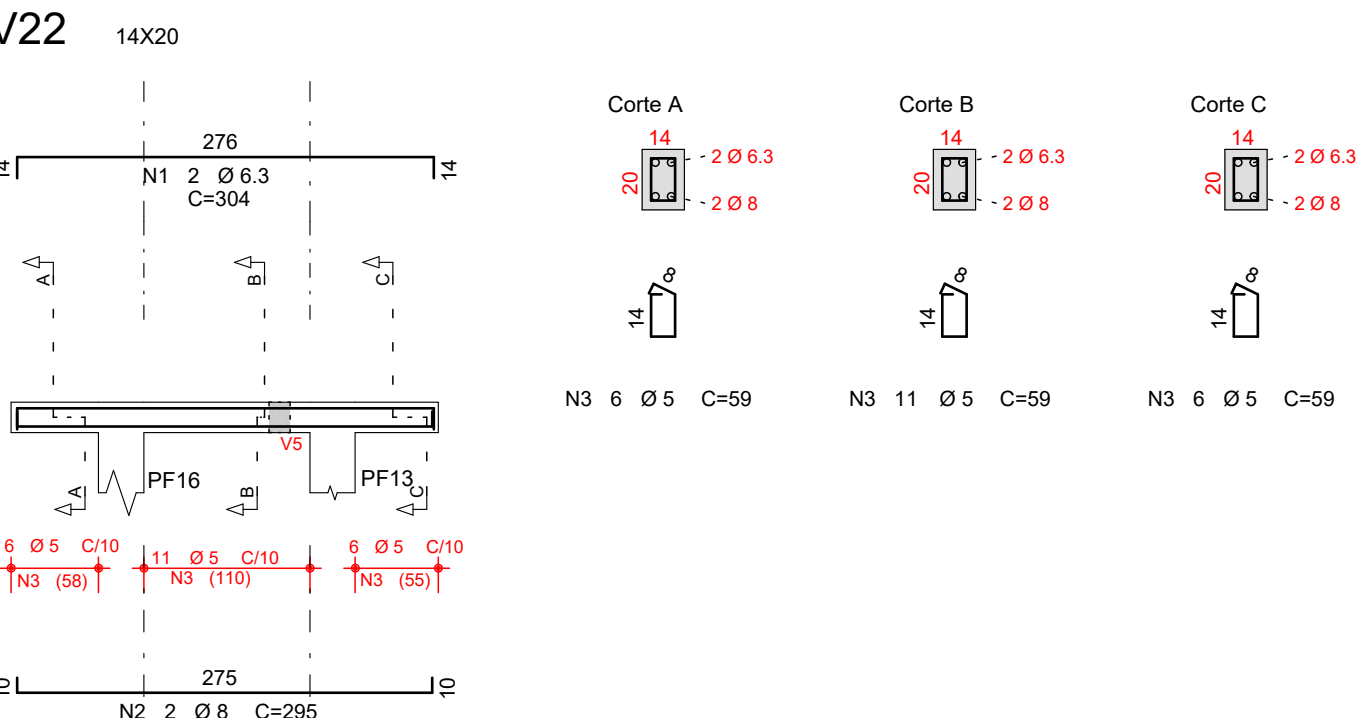
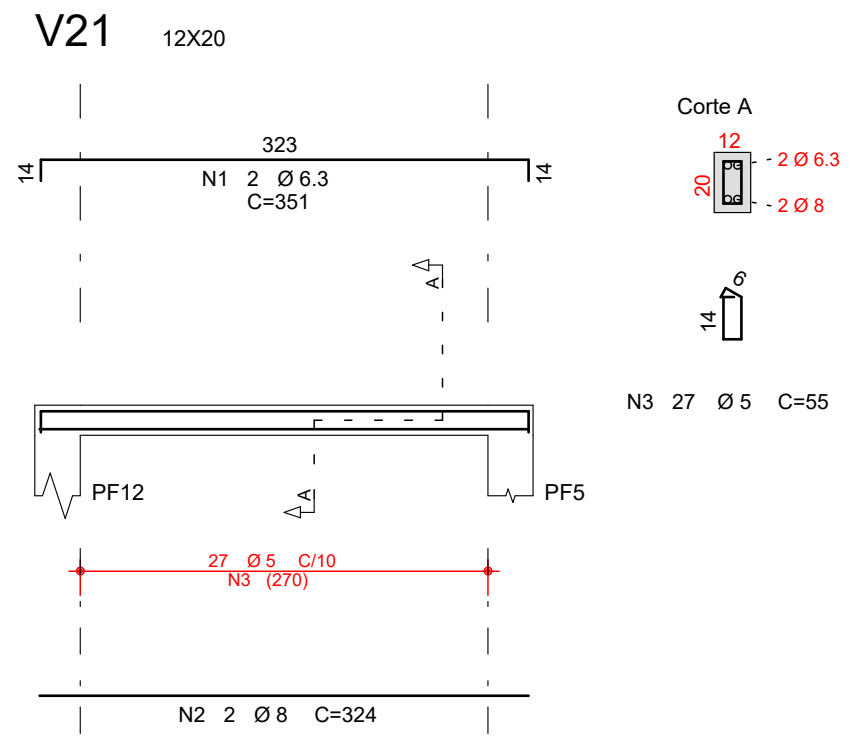
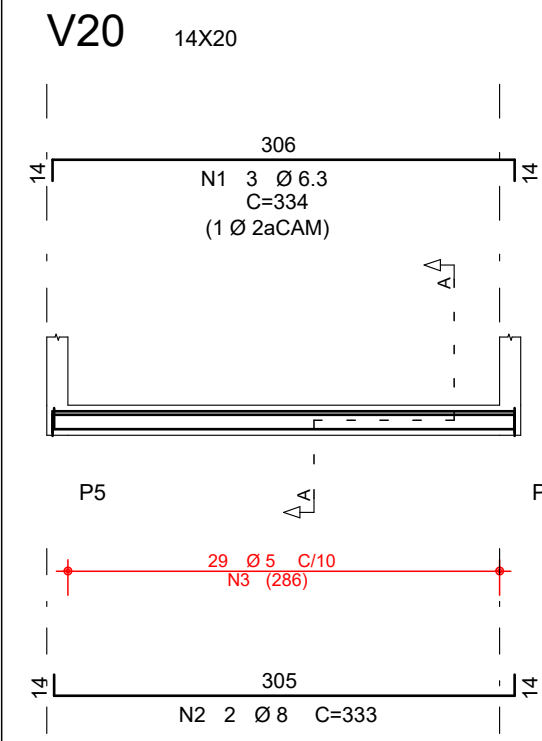
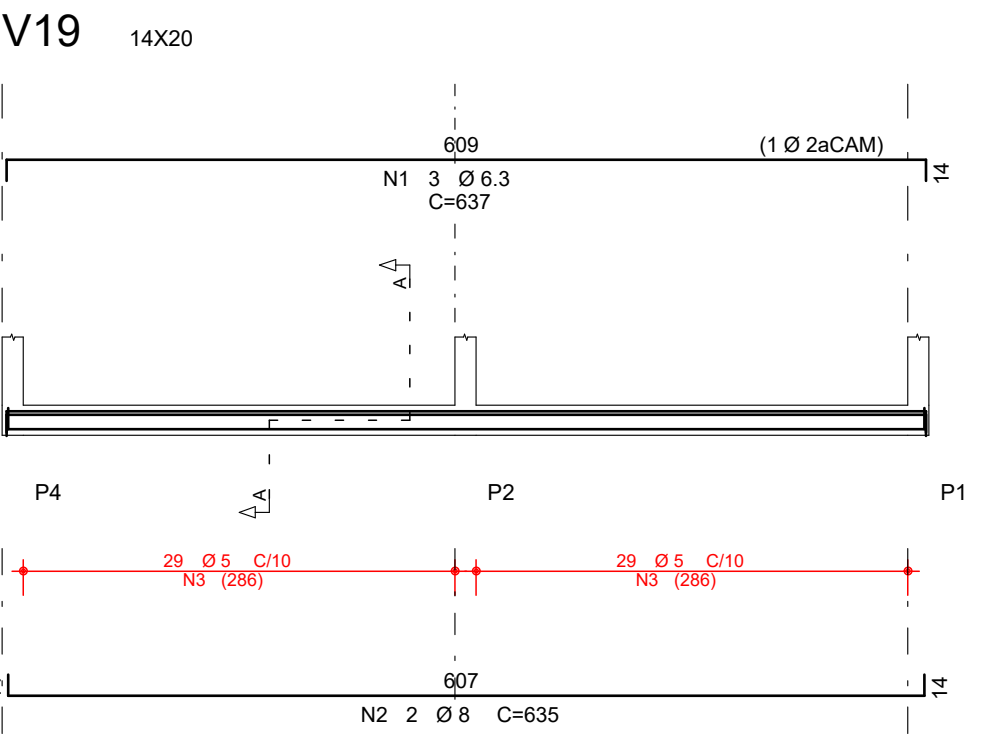
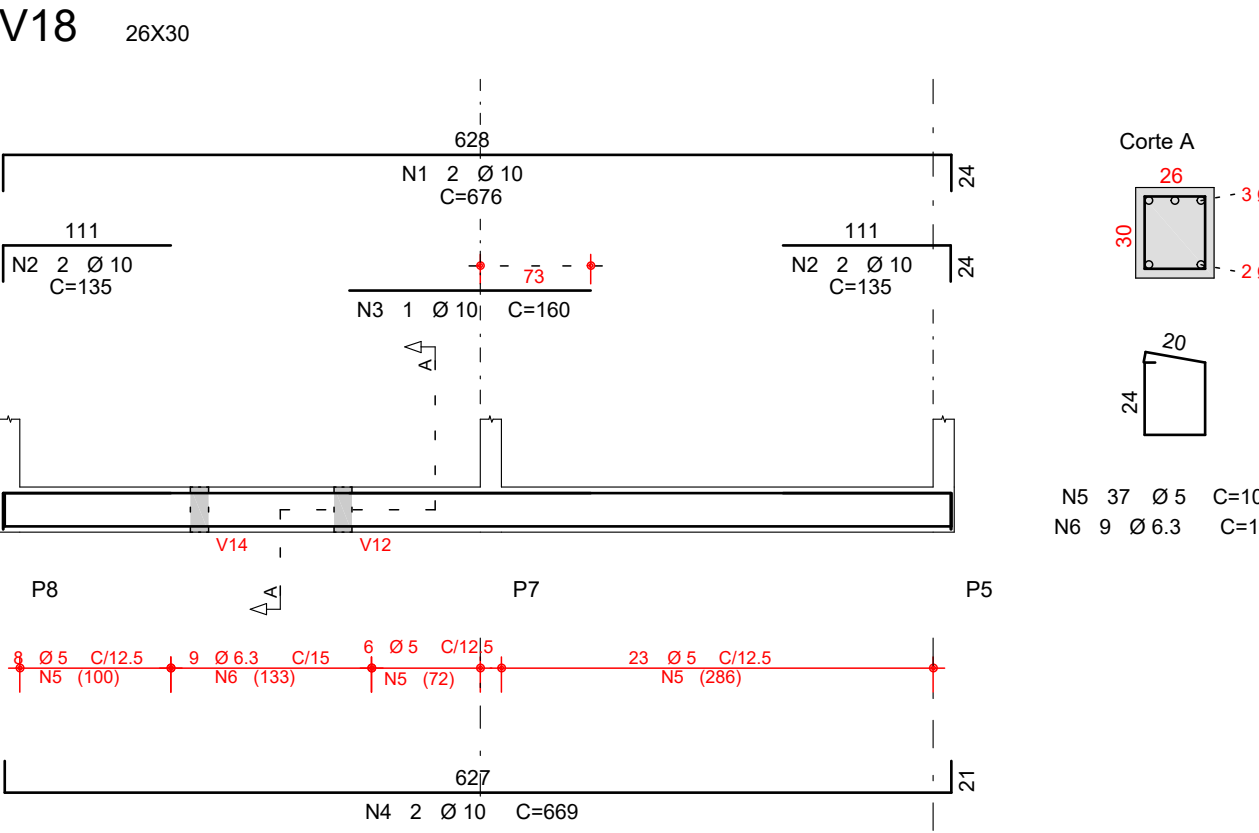
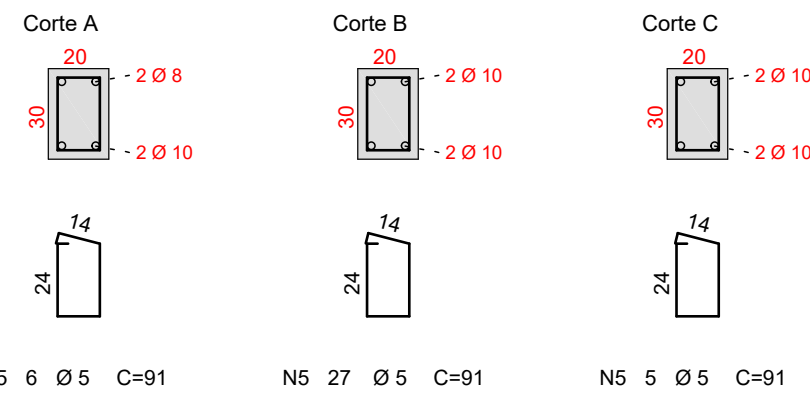
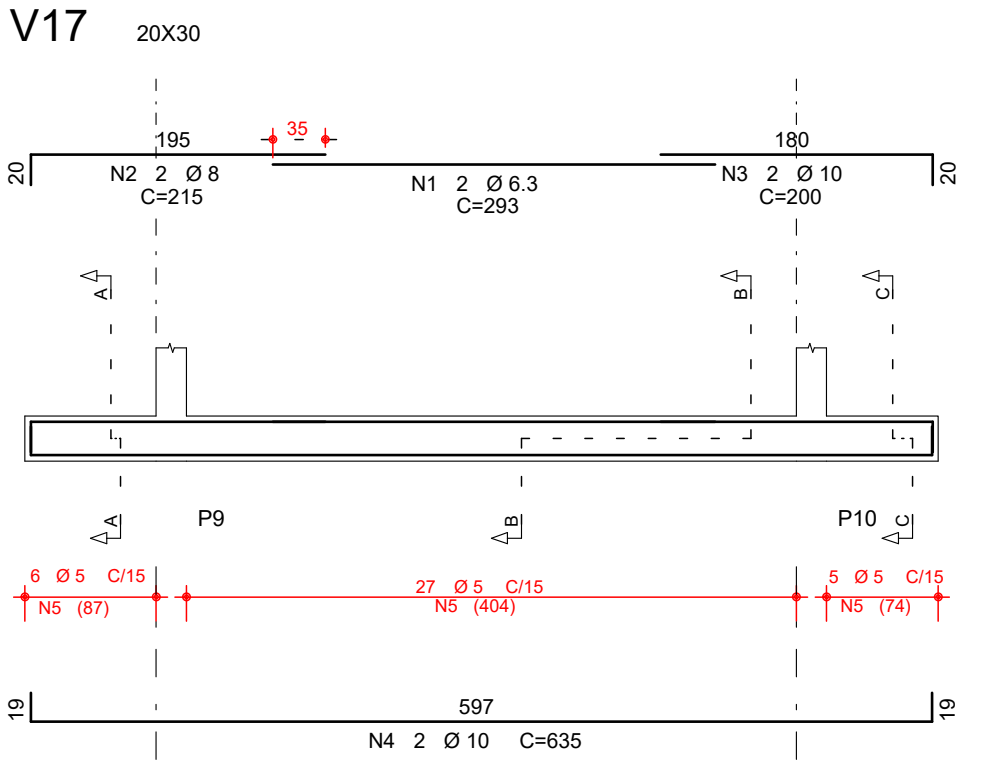
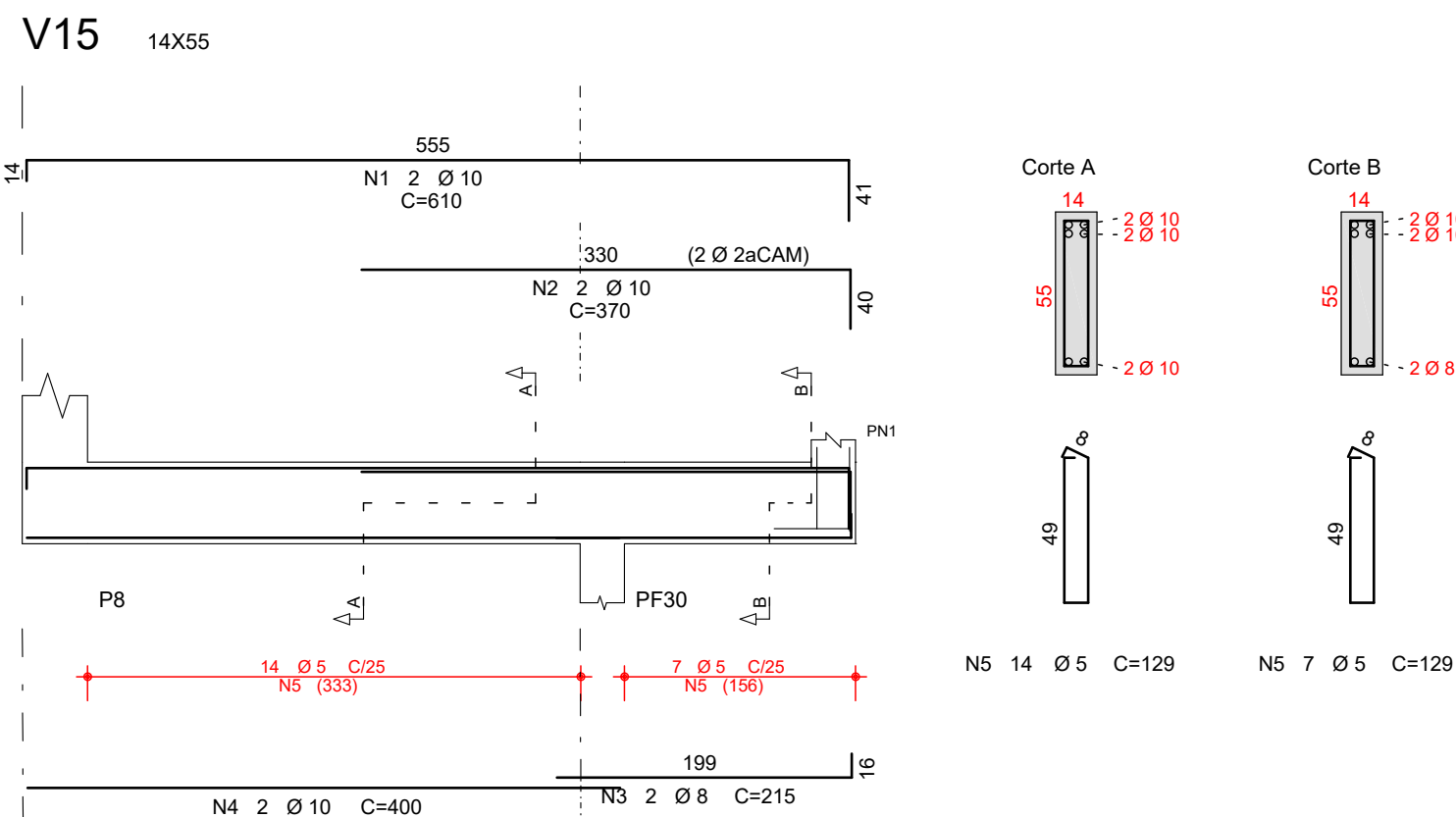
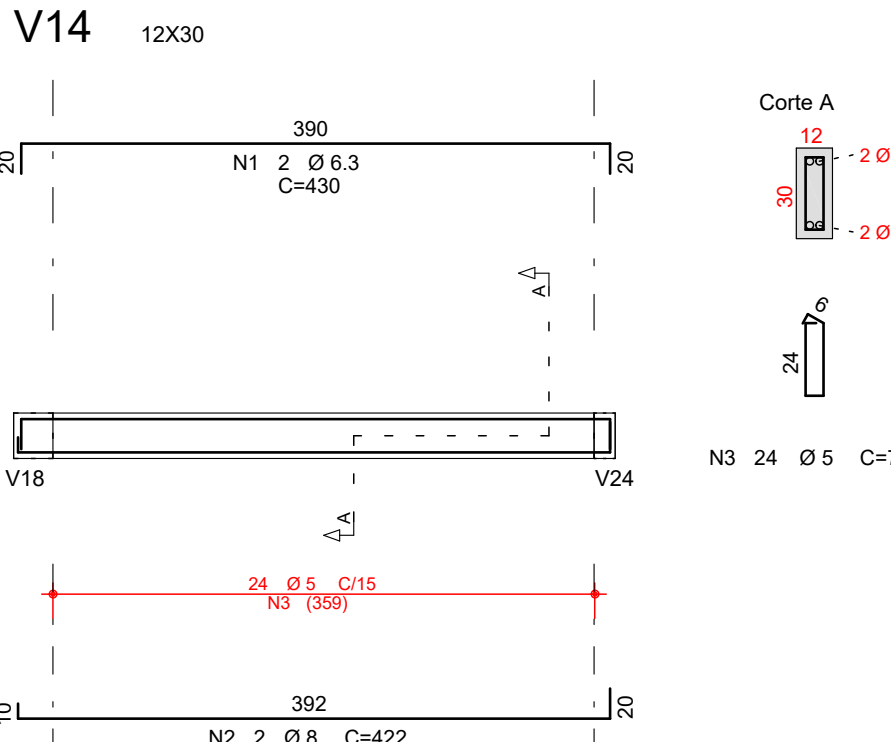
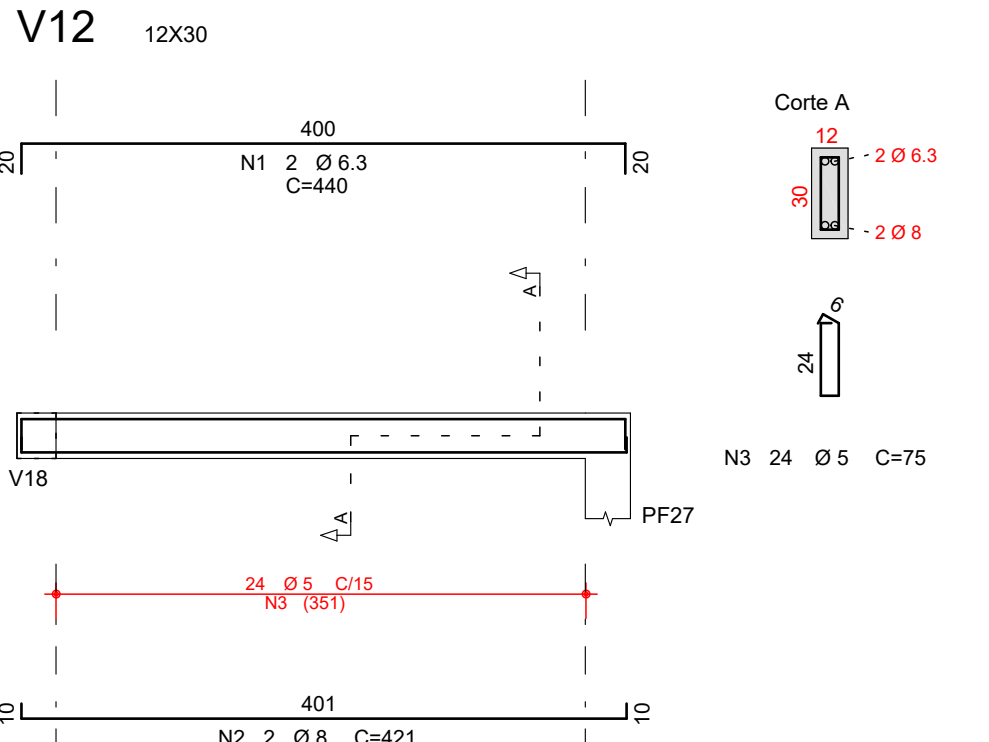
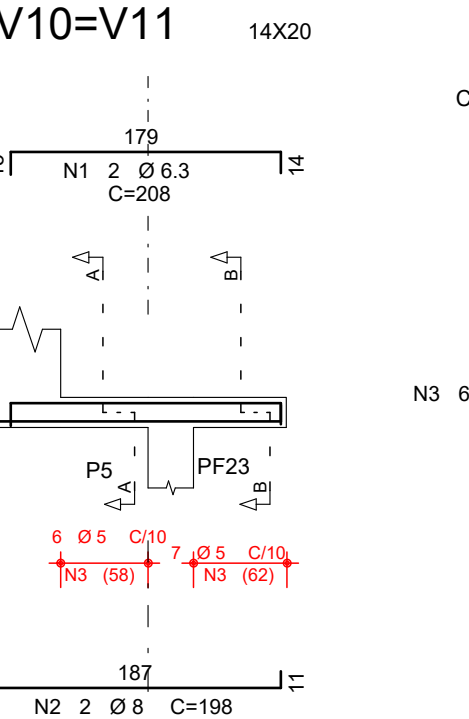
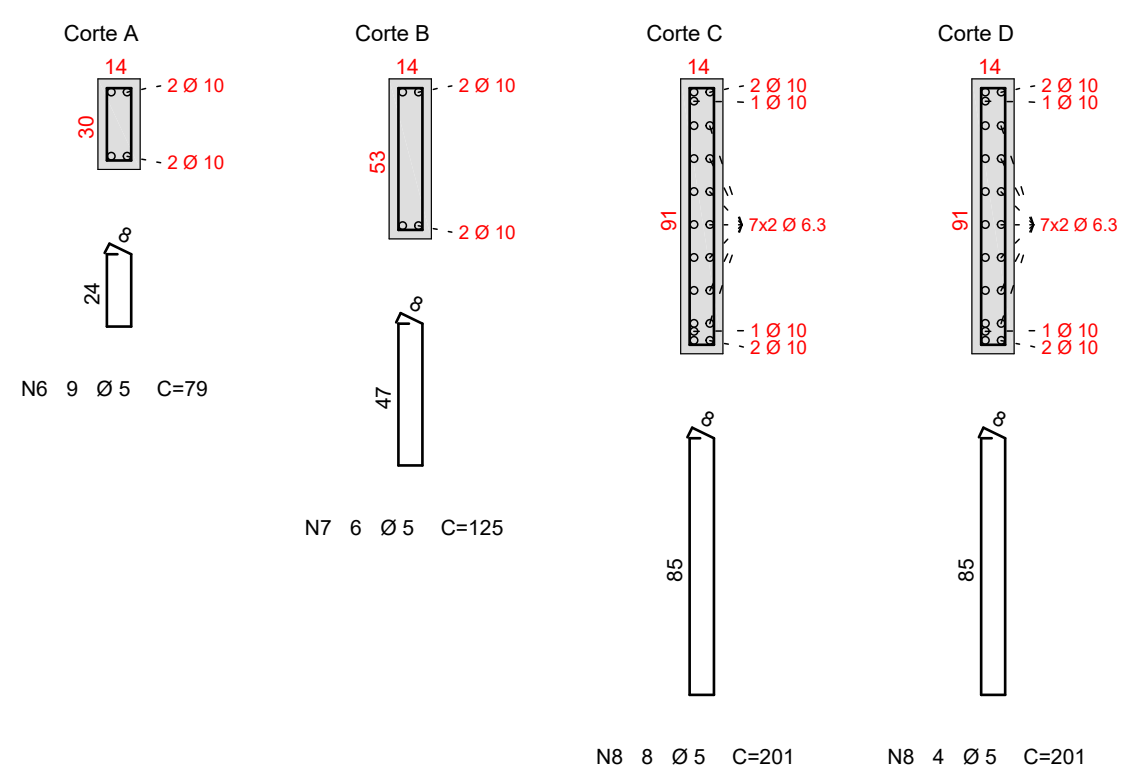
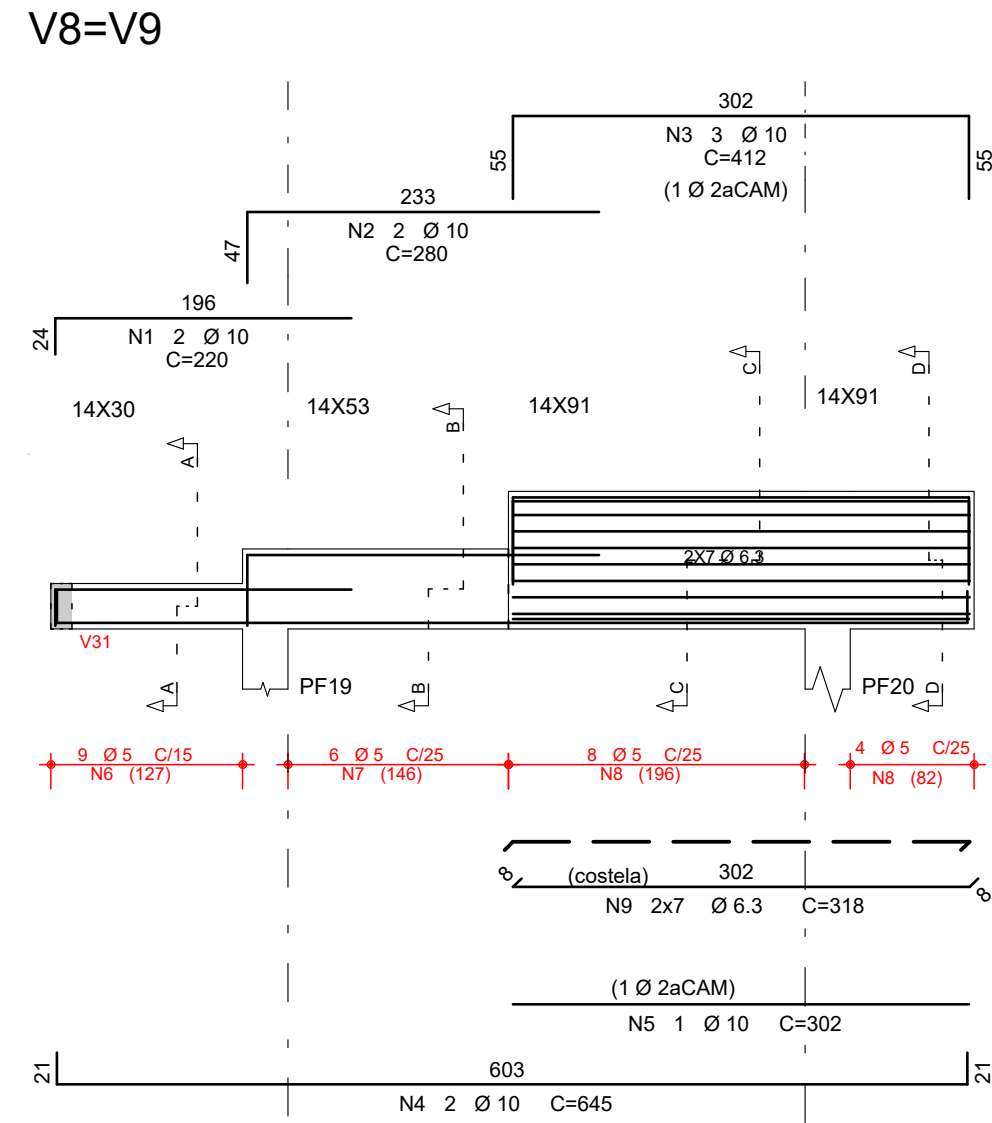
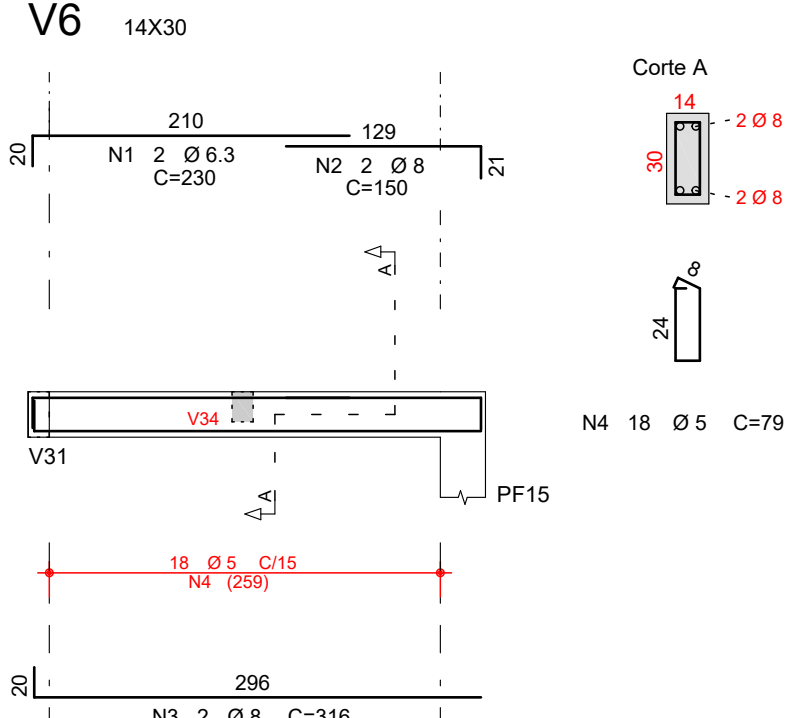
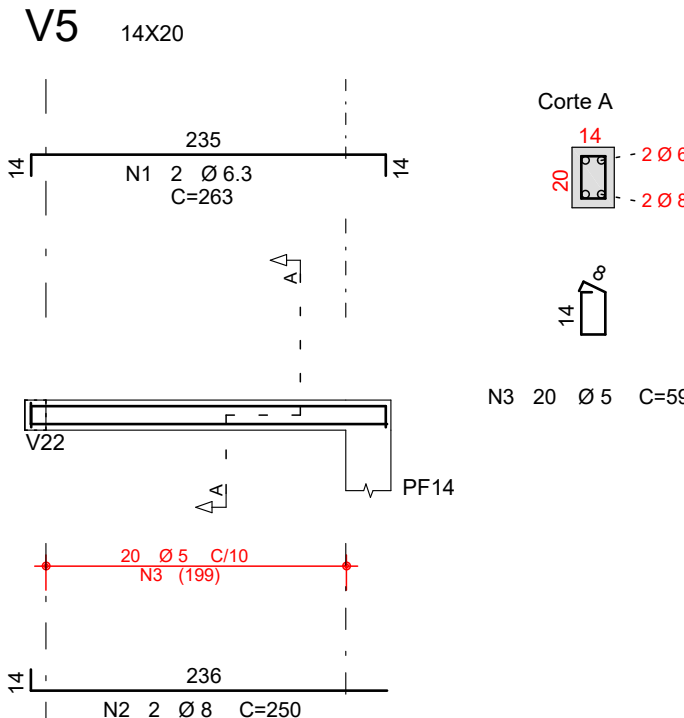
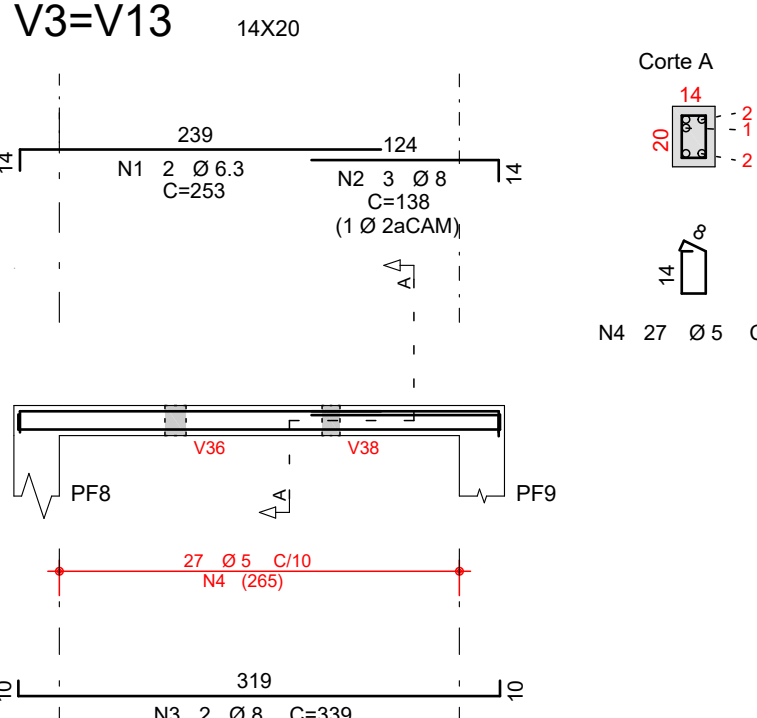
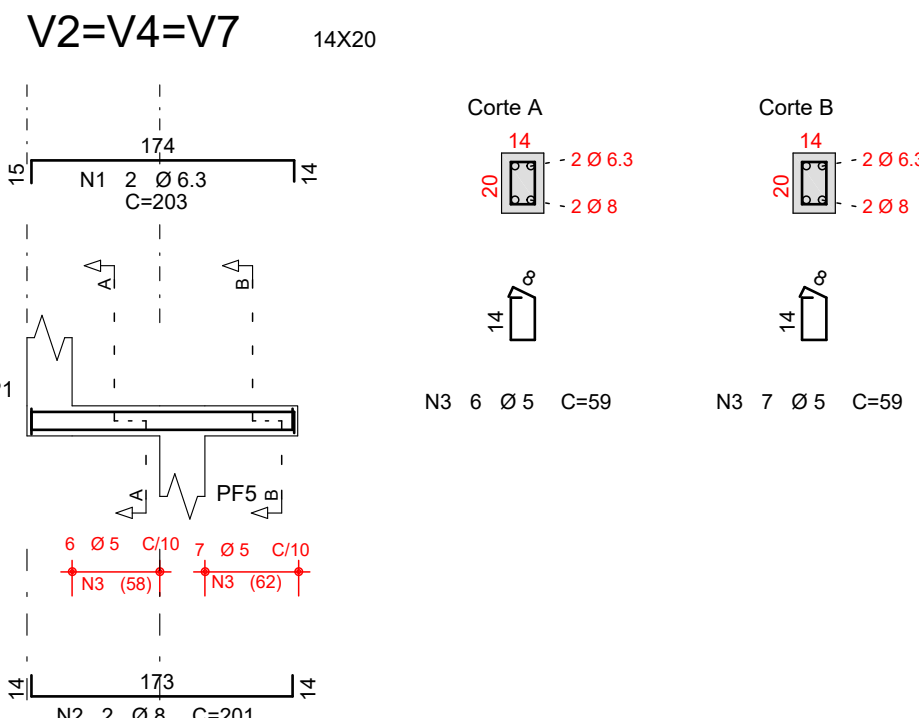
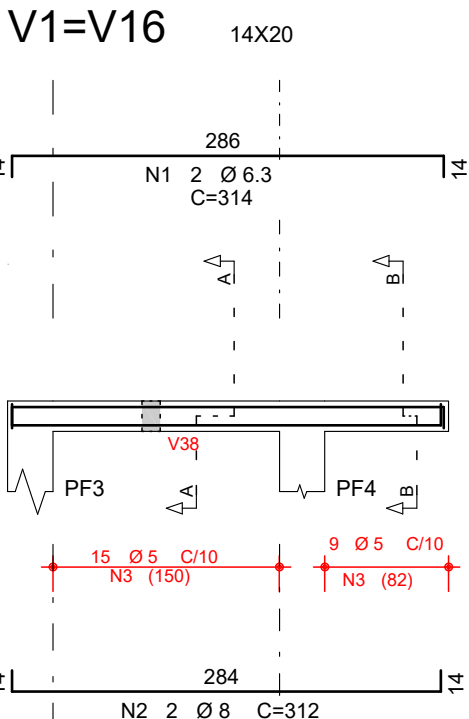


	AÇO	POS	BIT	QUANT	COMPRIMENTO	UNIT	TOTAL
	(mm)				(cm)		(cm)
V1=V16 (X2)							
	50	1	6,3	4	314	1256	
	50	2	8	4	312	1248	
	60	3	5	5	68	2532	
V2=V4=V7 (X3)							
	50	1	6,3	6	203	1218	
	50	2	8	6	201	1206	
	60	3	5	39	59	2301	
V3=V13 (X2)							
	50	1	6,3	4	253	1012	
	50	2	8	4	138	552	
	60	3	5	54	59	3186	
V5							
	50	1	6,3	2	263	526	
	50	2	8	2	250	500	
	60	3	5	20	59	1180	
V6							
	50	1	6,3	2	230	460	
	50	2	8	2	150	300	
	60	3	5	2	316	632	
V8=V9 (X2)							
	50	1	10	4	220	880	
	50	2	10	4	280	1120	
	50	3	10	6	412	2472	
	50	4	10	6	645	2580	
	50	5	10	2	302	604	
	50	6	5	18	79	1422	
	60	7	5	12	125	1500	
	60	8	5	24	201	4824	
	60	9	6,3	28	318	8904	
V10=V11 (X2)							
	50	1	6,3	4	208	832	
	50	2	8	4	198	792	
	60	3	5	26	59	1534	
V12							
	50	1	6,3	2	440	880	
	50	2	8	2	421	842	
	60	3	5	75	75	1800	
V14							
	50	1	6,3	2	430	860	
	50	2	8	2	422	844	
	60	3	5	24	75	1800	
V15							
	50	1	10	2	610	1220	
	50	2	10	2	370	740	
	50	3	8	2	215	430	
	60	4	10	2	400	800	
	60	5	5	21	129	2709	
V17							
	50	1	6,3	2	293	586	
	50	2	8	2	215	430	
	50	3	10	2	200	400	
	50	4	10	2	635	1270	
	60	5	5	38	91	3458	
V18							
	50	1	10	2	678	1352	
	50	2	10	4	135	540	
	50	3	10	2	160	320	
	50	4	10	2	669	1338	
	50	5	5	37	103	3811	
	60	6	6,3	9	104	636	
V19							
	50	1	6,3	3	637	1911	
	50	2	8	3	635	1270	
	60	3	5	58	59	3422	
V20							
	50	1	6,3	3	334	1002	
	50	2	8	2	333	666	
	60	3	5	29	89	1711	
V21							
	50	1	6,3	2	351	702	
	50	2	8	2	324	648	
	60	3	5	27	55	1485	
V22							
	50	1	6,3	2	304	608	
	50	2	8	2	295	590	
	60	3	5	23	59	1357	
V23=V26 (X2)							
	50	1	6,3	4	208	832	
	50	2	8	4	201	804	
	60	3	5	26	55	1430	
V24							
	50	1	6,3	2	200	400	
	50	2	8	2	210	420	
	60	3	5	18	79	1422	
V25							
	50	1	6,3	2	304	608	
	50	2	8	2	277	554	
	60	3	5	23	59	1357	
V27							
	50	1	6,3	2	213	426	
	50	2	8	2	198	396	
	60	3	5	14	59	826	
V28=V29(inv)=V32=V33(inv)							
	50	1	6,3	2	463	926	
	50	2	8	2	467	934	
	60	3	5	33	65	2145	
V30=V31 (X2)							
	50	1	8	4	390	1560	
	50	2	8	4	389	1556	
	60	3	5	44	79	3476	
V34							
	50	1	6,3	2	235	470	
	50	2	8	2	218	436	
	60	3	5	18	59	1062	
V35=V36 (X2)							
	50	1	6,3	4	152	608	
	50	2	8	4	155	620	
	60	3	5	26	59	1534	
V37							
	50	1	6,3	2	233	466	
	50	2	8	2	233	466	
	60	3	5	19	55	1045	
V38							
	50	1	6,3	2	231	462	
	50	2	8	2	231	462	
	60	3	5	19	55	1045	
V39							
	50	1	6,3	2	251	502	
	50	2	8	2	224	448	
	60	3	5	17	55	935	
V40							
	50	1	6,3	2	249	498	
	50	2	8	2	222	444	
	60	3	5	17	55	935	

RESUMO AÇO CA 50-60				
AÇO	BIT	COMPR	PESO	PESO
(mm)	(mm)	(m)	(kg)	(kg+10%)
60	5	590	91	100
50	6,3	279	75	83
50	8	214	85	93
60	10	167	103	113
Peso Total	60	=	100 kg	
Peso Total	50	=	282 kg	



QUADRO DE REVISÕES					
REVISÃO	DATA	MOTIVAÇÃO	SOLICITANTE	CONTEÚDO	AUTOR
R00	09/11/2023	Nº Processo SEI 201900036013420	OC-GEPOC	Emissão Inicial	Lilian de Fátima

APROVAÇÃO DE PROJETO:

Os projetos referentes ao Processo SEI Nº _____, encontram-se dentro das normas e exigências da GOINFRA, tendo sido elaborado por profissionais habilitados.

GERENTE DE PROJETOS DE OBRAS CIVIS _____ DIRETORIA DE OBRAS CIVIS _____

GO
INFRA

GOIÁS
GOVERNO DO ESTADO

Av. Gov. José Ludovico de Almeida, 20, Cj Calçaria (BR-153), Goiânia-GO. CEP: 74623-160. (62) 3265-4000

PROJETO ESTRUTURAL
GINÁSIO DE ESPORTES - PADRÃO
ADEQUAÇÃO ACESSIBILIDADE

ENDEREÇO DA OBRA: _____

PROPRIETÁRIO: _____ AGÊNCIA GOIANA DE INFRAESTRUTURA E TRANSPORTES - GOINFRA

AUTOR DO PROJETO: _____ ENG. CIVIL LILIAN DE FÁTIMA E SILVA | CREA 1014222800/D-GO

ESTRUTURA DE CONCRETO			
CONTEÚDO: Armação da Vigas Baldrames			
ÁREA DO TERRENO: _____ m²	DESENHO: Lilian de Fátima	ESCALA: 1:50	FOLHA: 06/07
ÁREA CONSTRUÍDA: 1169,64 m²	PROGRAMA: TQS - 2021	DATA: 11/2023	FORMATO: A0 (841x1189mm)
IMPORTANTE: ANTES DA EXECUÇÃO, VERIFICAR A COMPATIBILIDADE COM PROJETOS COMPLEMENTARES: EXECUTIVO, ESTRUTURAL, ELÉTRICO E HIDRÁULICO.			